

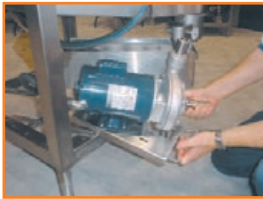
"3D-5" Series by

The SERVICEABLE Machine

**Greater
Door
Clearance**
Wash Taller Wares

(Dual Screens)
Protect intake of pump.

(Quick Service Pump)
Pump slides forward
providing for easier repair.



(Swift Plumbing Removal)
All plumbing is connected
using zero-interference
Stainless/Terelene Couplers.



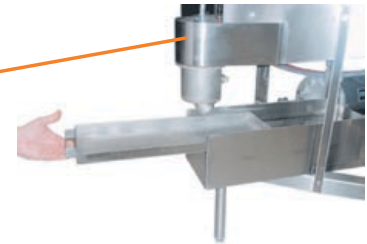
AFC-3D-S
Corner outside
sump with built-in
scrap accumulator



(Air Gap fill)
Eliminates the need for check
valves and vacuum breakers



(20.5" Door Clearance)
Perfect for pizza
applications.



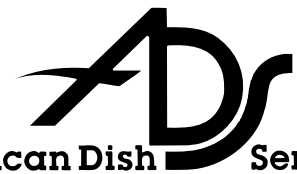
(Diagonal Scrap Trap)
Provides easy screen removal
in both corner and pass-
through models

Save time and money by reducing labor.

You can now machine wash that which was once washed by hand.

At American Dish Service, Quality People, Designs,
and Products have been the foundation of our
organization for over **45 years**.

www.americandish.com



American Dish Service
Manufacturers of Ware Washing Equipment

900 Blake Street Edwardsville, KS 66111-3820 **Toll Free (800) 922-2178 Phone (913) 422-3700 Fax (913) 422-6630**

"3D-5" Series

(Additional Options)
Also available with solid
chemical dispensing

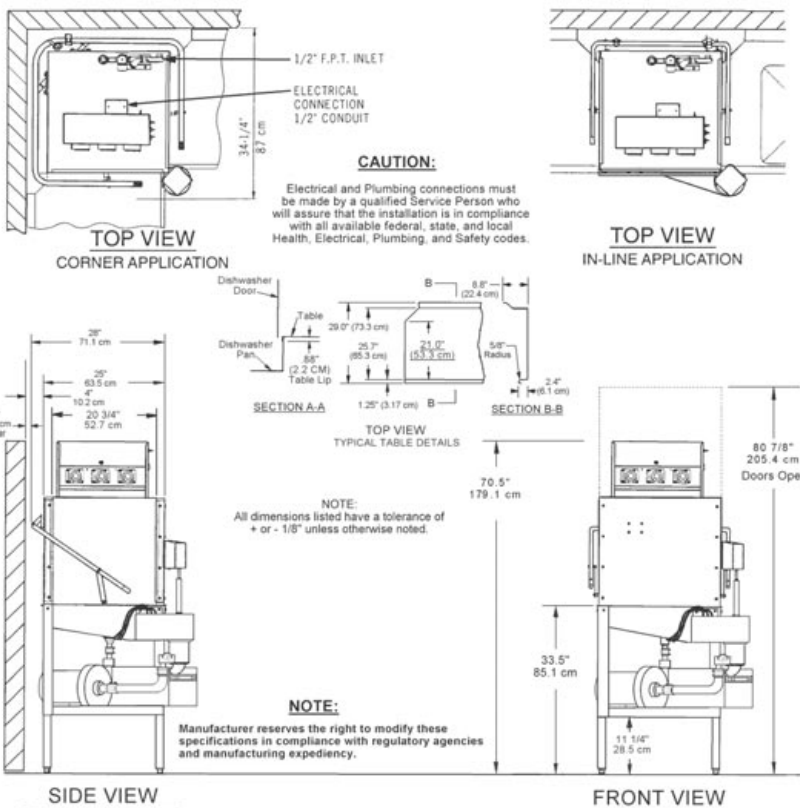


**(Stainless Steel Spray Bases,
Bayonets, and Manifold Couplings)**
Allows for quick release spray arm
removal for ease of cleaning



AF-3D-S
Pass-thru outside
sump with built-in
scrap accumulator

- **Convertible Design**
- **Great door clearance 20.5"**
- **Quick Service 1 1/2 HP pump**
- **Quick release spray arms**
- **Stainless steel air gap**
- **Run indicator light**
- **Simple to clean**
- **Available with solid chemical dispensing**



ADS
American Dish Service
Manufacturers of Ware Washing Equipment

www.americandish.com

3D-S Series SPECIFICATIONS

	FAMILY MODELS
	AF-3DS AH-3DS
	AFC-3DS AHC-3DS
RATED CAPACITY (Racks/Hr.)	37 23
WASH TIME (Sec.)	45 75
RINSE TIME (Sec.)	30 60
DWELL (Sec.)	15 15
TOTAL CYCLE TIME (Sec.)	90 150
WATER TEMPERATURE (Supply)	120 °F Min. 49 °C Min.
WATER CONSUMPTION	2.2 Gal's Per Cycle 8.3 Liters Per Cycle
MOTOR	1.5 HP 1.125 KW
ELECTRICAL RATINGS	115 Volts Single Phase
Connect to Supply Source using 10-12 AWG copper wires. Circuit Protection: 20 AMP Circuit Breaker or Fuse with a 20 AMP Rating.	
RACK SIZE	19 3/4" x 19 3/4" 50.2 cm x 50.2 cm
DOOR CLEARANCE	20 3/4" x 20 1/2" 52.7 cm x 52.1 cm
WATER INLET	1/2" F.P.T.
DRAIN (Scrap Trap)	2" Pipe
HEIGHT (Door Open)	80 7/8" 205.4 cm
HEIGHT (Door Closed)	70 1/2" 179.1 cm
WIDTH (Overall)	33 1/2" 85.1 cm
WIDTH (Table to Table)	25" 63.5 cm
DEPTH (Overall)	34 1/4" 86.9 cm
SHIPPING WEIGHT	295 lb. 133.8 kg.
SHIPPING VOLUME	56.25 cu. ft. 1.59 cu meters

© 10/02

ADS has built a strong history based on Customer Service, Quality and Reliability. A Commitment to Excellence is the driving force behind American Dish Service.